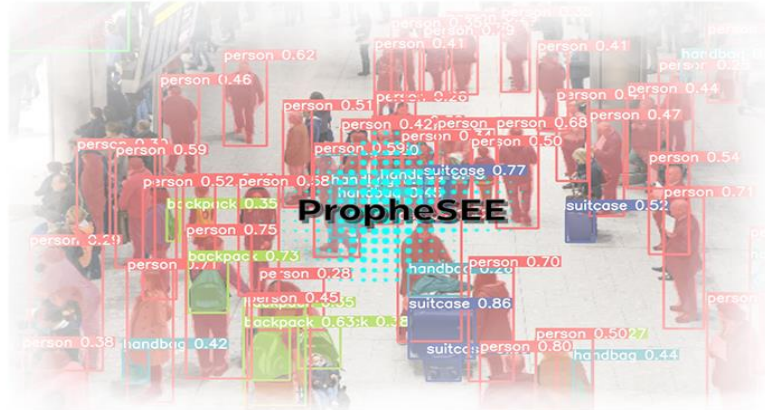


# PropheSEE



## Mass Crowd Counting

Airports  
Rock Concerts  
Religion Gathering Perimeters  
Sports Events



PropheSEE By Sparrow Energy Services  
Address: Bareket Industrial Park, 19, Caesarea, Insrael  
[info@sparrowenergy.com](mailto:info@sparrowenergy.com)



## PropheSEE

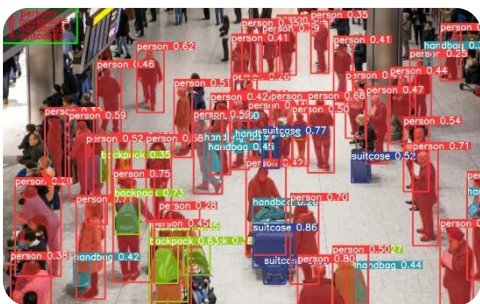
### An AI for Counting People in Crowds

Ensuring the safety of visitors in large-scale events around the globe is top priority. Understanding the movement of people in defined areas is an integral part of providing reliable security.

**PropheSEE** is an AI-powered crowd counting technology that counts the number of people in an area instantaneously, which can be employed at a wide variety of locations where congestion is expected to occur.

When it comes to assessing the number of people present at such crowded locations as an airport or in any large events, number changes constantly. PropheSEE is a People Counter, AI that can connect to any video content/network cameras and count the number of people present in images. technology for crowd counting.

Since 2020, PropheSEE was developed to allow counting thousands of people instantly while providing more data considering presence of objects in that might be required for more accurate analysis.



## High Speed and Accuracy Through Deep Learning

In crowded places, it can be difficult for systems to obtain an accurate count of the number of people by detecting human bodies or faces, as human bodies may overlap, or people may not be facing the camera.

**PropheSEE** combines few calculation methods in parallel and average the results and therefore, can achieve high accuracy even when people are overlapping each other.

This crowd counting technology is just one result of **PropheSEE** research into deep learning.

**PropheSEE** is using deep learning to detect the floor area in an image and then calculates the relative size of a human on the different part of the image and then making the required calculations to evaluate the number of people in an image vs. the covered floor area.

**PropheSEE** may recognize people by seeing even only a part of their body, as their heads for example and estimate/calculate the remaining body position. Those methods allow **PropheSEE** to use low resolution, low FPS cameras and in a low light and high noise images while keeping counting accurate. Therefore, **PropheSEE** allow lowering the initial costs by even using any old installed based cameras.



## PropheSEE Comes from the Word **Prophecy** and Predicting the Future Counting is The Real Goal

**PropheSEE** can not only count the number of people in an image, fast and accurate but also to learn the pattern of people moving in an area according to load and time.

The data is then being collected to the DB and being used for further automated analysis.

By using Machine Learning technics, **PropheSEE** learns about movement patterns of people and can predict future counting even minutes before the actual counting occurs.

By allowing **PropheSEE** to connect with a facility data center, as airport flight schedule DB, **PropheSEE** then can combine few methods, as takeoff/landing schedule, counting of neighbor cameras/cameras on the same path and the data analysis from the ML models and predict the future counting even tens of minutes earlier for the actual counting.